

Case 13

Question 1 (written by Joe Edwards)

A patient with a genetic disease and his non-affected partner are worried about their future children inheriting the genetic disease, which he knows runs in his family. He consults his GP about this and they draw out a family tree, with affected individuals shown in red.

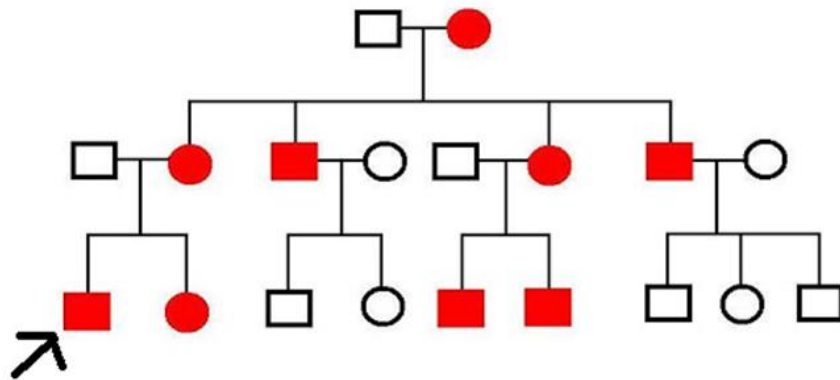


FIGURE 8

- a) Describe two reasons for drawing a family tree. [2]

- b) State and justify the type of inheritance this genetic disease is most likely to exhibit. [2]

Medical Education Society: A100 Year 1 Practice SAP Questions

- c) Calculate the percentage chance that each of this patient's children will inherit the genetic disease.

[1]

Answer: _____

Medical Education Society: A100 Year 1 Practice SAP Questions

Question 2 (written by Rehaan Khokar)

The parents of a deaf female child are carriers for congenital deafness. The parents are planning to have another child.

- a) What is the probability that this child might be a carrier for congenital deafness?

Draw a tree diagram in the space below to explain your answer.

[3]

Answer: _____

Medical Education Society: A100 Year 1 Practice SAP Questions

Question 3 (written by Joe Edwards)

A 19-year-old patient with autism is brought an emergency department with unexplained injuries in unexplained circumstances. The patient is distressed and refuses to talk to the triage nurse. The nurse can see that the injuries are not life-threatening but is worried about possible safeguarding issues with this patient.

a) Define safeguarding.

[1]

b) Suggest why this patient may be vulnerable to abuse.

[2]

c) Describe how the nurse might adapt her consultation to better meet the needs of this patient.

[3]

Medical Education Society: A100 Year 1 Practice SAP Questions

Question 4 (written by Rehaan Khokar)

Genetic testing often has legal and ethical issues surrounding it.

a) Describe and explain **two** legal and **two** ethical issues with genetic testing.

[4]
